



## Performance Report for: <https://elderberrysyrupbyruth.com/>

Report generated: Sat, Mar 6, 2021 6:15 PM -0800  
 Test Server Location: Vancouver, Canada  
 Using: Chrome (Desktop) 86.0.4240.193, Lighthouse 6.3.0  
 Analysis options:  iPad 3/4/Air/Air 2/2017

|          |             |           |                     |                  |                 |
|----------|-------------|-----------|---------------------|------------------|-----------------|
| <b>A</b> | Performance | Structure | L. Contentful Paint | T. Blocking Time | C. Layout Shift |
|          | 100%        | 100%      | 0.7s                | 0ms              | 0.04            |

### Top Issues

| IMPACT | AUDIT                            |                             |
|--------|----------------------------------|-----------------------------|
| Low    | Avoid an excessive DOM size      | 336 elements                |
| Low    | Avoid enormous network payloads  | Total size was 675 KiB      |
| Low    | Avoid long main-thread tasks     | 2 long tasks found          |
| Low    | Reduce JavaScript execution time | 0.1 s                       |
| Low    | Remove unused CSS                | Potential savings of 60 KiB |

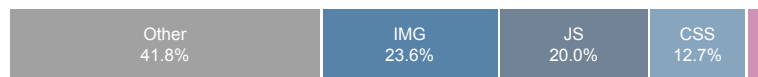
### Page Details



Total Page Size - 672KB



Total Page Requests - 55



Legend: HTML, JS, CSS, IMG, Video, Font, Other

### How does this affect me?

Today's web user expects a fast and seamless website experience. Delivering that fast experience can result in increased visits, conversions and overall happiness.

As if you didn't need more incentive, **Google has announced that they are using page speed in their ranking algorithm.**

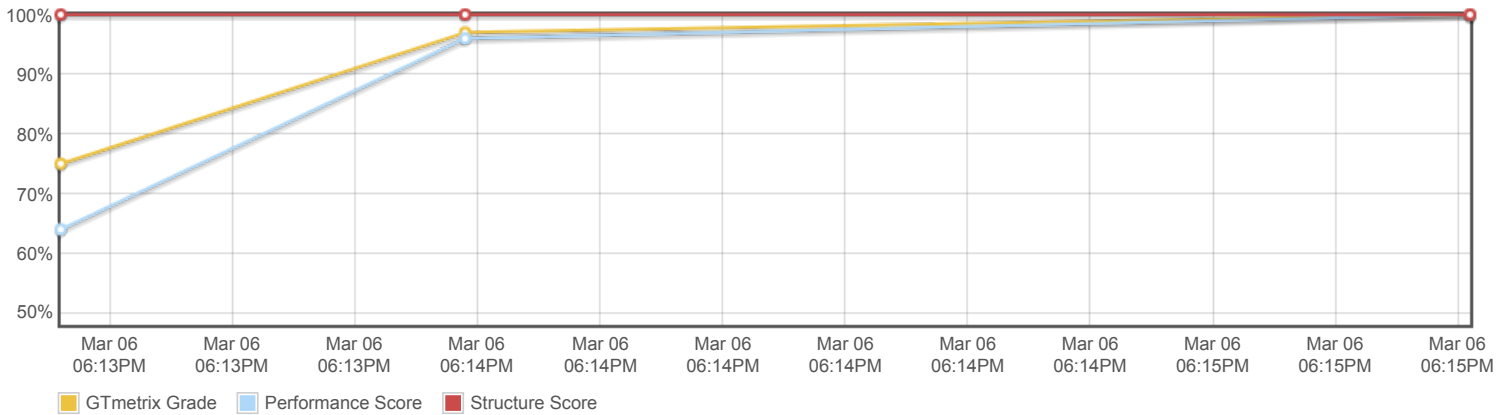
### About GTmetrix



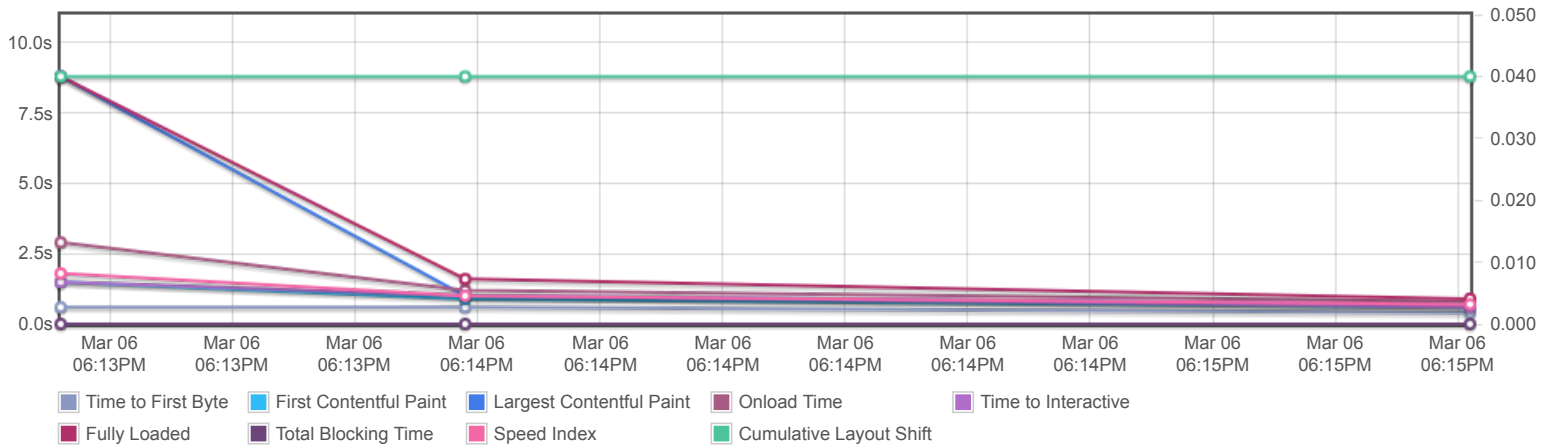
GTmetrix is developed by the good folks at **Carbon60**, a Canadian hosting company with over 25 years experience in web technology.

<https://carbon60.com/>

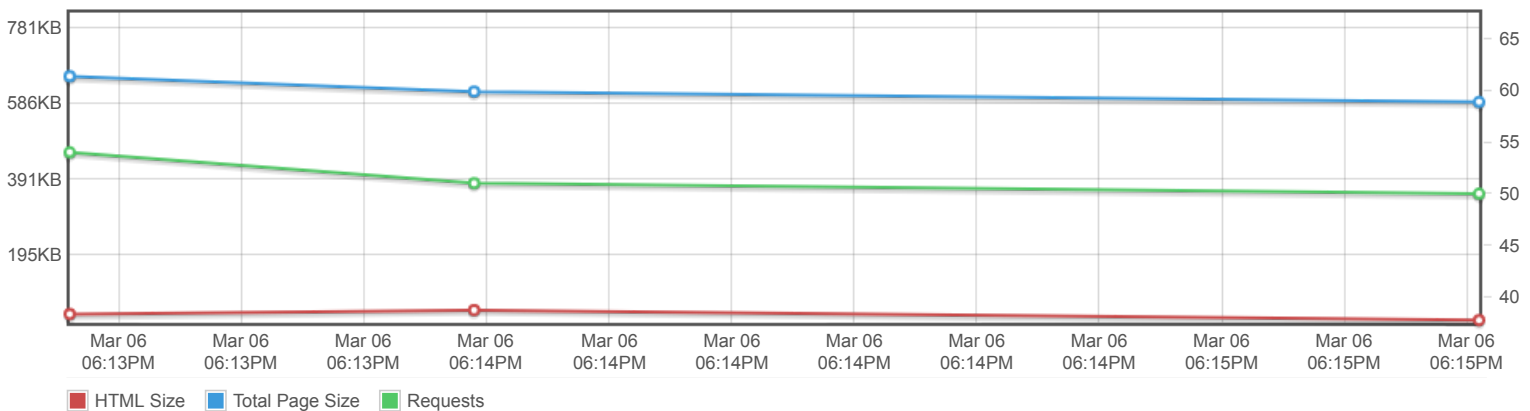
### Page scores



### Page metrics

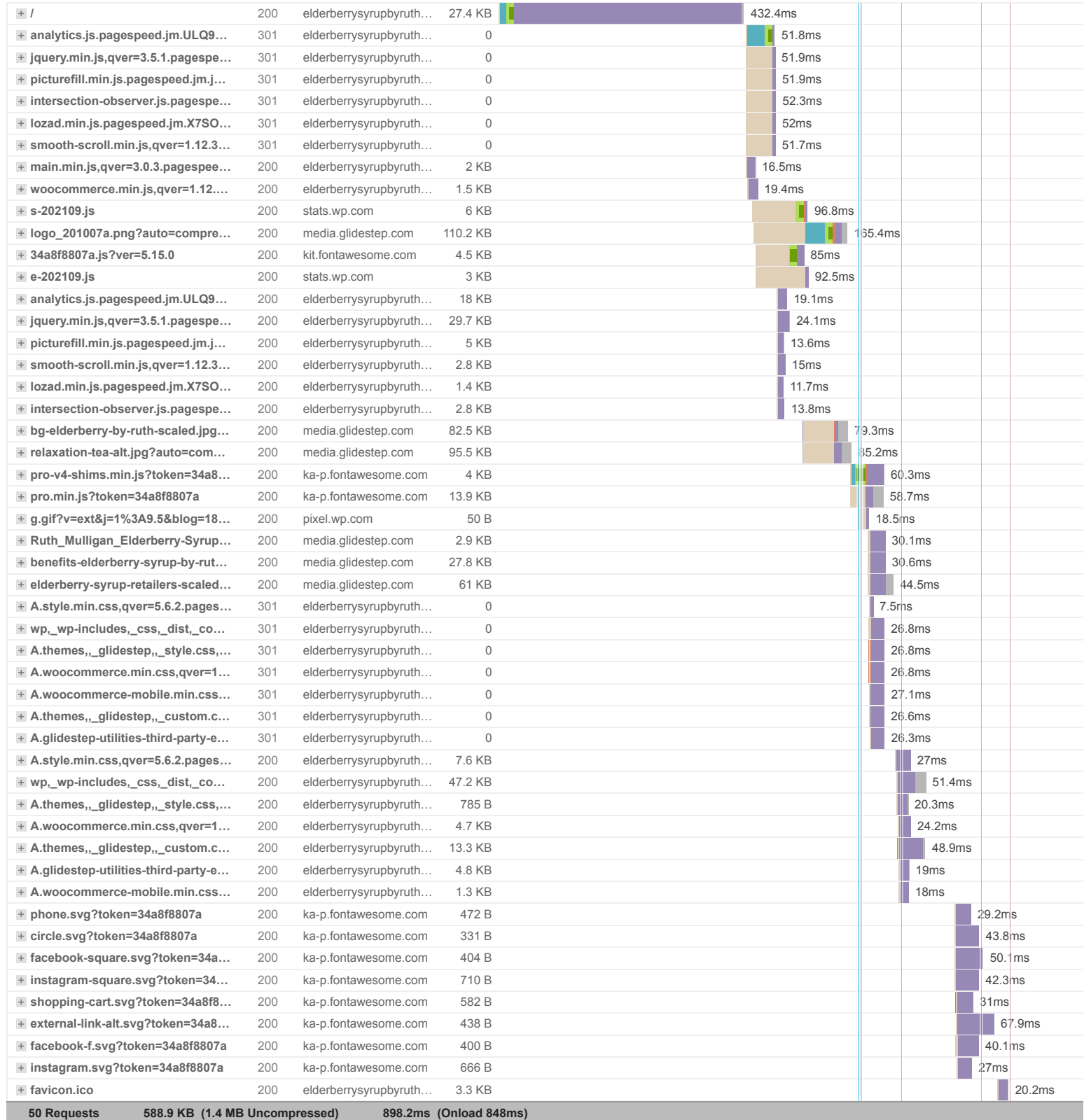


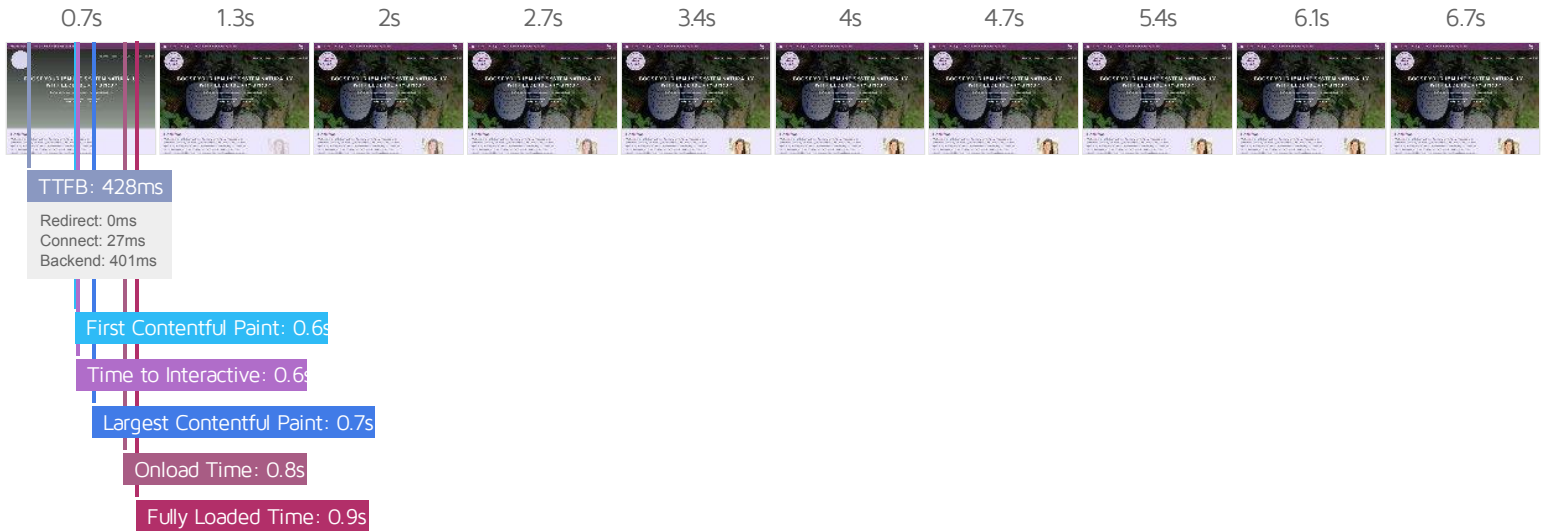
### Page sizes and request counts



The waterfall chart displays the loading behaviour of your site in your selected browser. It can be used to discover simple issues such as 404's or more complex issues such as external resources blocking page rendering.

### Elderberry Syrup by Ruth - Organic Ingredients, Authentic Recipes





## Performance Metrics

|   |   |  |   |
|---|---|--|---|
| <h3>First Contentful Paint</h3> <p>How quickly content like text or images are painted onto your page. A good user experience is 0.9s or less.</p>                                    | <p>Good - Nothing to do here</p> <p><b>0.6s</b></p> | <h3>Time to Interactive</h3> <p>How long it takes for your page to become fully interactive. A good user experience is 2.5s or less.</p>           | <p>Good - Nothing to do here</p> <p><b>0.6s</b></p> |
| <h3>Speed Index</h3> <p>How quickly the contents of your page are visibly populated. A good user experience is 1.3s or less.</p>  | <p>Good - Nothing to do here</p> <p><b>0.7s</b></p> | <h3>Total Blocking Time</h3> <p>How much time is blocked by scripts during your page loading process. A good user experience is 150ms or less.</p> | <p>Good - Nothing to do here</p> <p><b>0ms</b></p>  |
| <h3>Largest Contentful Paint</h3> <p>How long it takes for the largest element of content (e.g. a hero image) to be painted on your page. A good user experience is 1.2s or less.</p> | <p>Good - Nothing to do here</p> <p><b>0.7s</b></p> | <h3>Cumulative Layout Shift</h3> <p>How much your page's layout shifts as it loads. A good user experience is a score of 0.1 or less.</p>          | <p>Good - Nothing to do here</p> <p><b>0.04</b></p> |

## Browser Timings

|            |       |          |      |              |       |
|------------|-------|----------|------|--------------|-------|
| Redirect   | 0ms   | Connect  | 27ms | Backend      | 401ms |
| TTFB       | 428ms | DOM Int. | 0.6s | First Paint  | 0.6s  |
| DOM Loaded | 0.6s  | Onload   | 0.8s | Fully Loaded | 0.9s  |

| IMPACT | AUDIT   |   |
|--------|---|---|
| Low    | <b>Avoid an excessive DOM size</b>                                  | 336 elements                                      |
| Low    | <b>Avoid enormous network payloads</b>                              | Total size was 675 KiB                            |
| Low    | <b>Avoid long main-thread tasks</b>                                 | 2 long tasks found                                |
| Low    | <b>Reduce JavaScript execution time</b>                             | 0.1 s   |
| Low    | <b>Remove unused CSS</b>  | Potential savings of 60 KiB                       |
| Low    | <b>Reduce initial server response time</b>                          | Root document took 400 ms                         |
| Low    | <b>Avoid serving legacy JavaScript to modern browsers</b>           | Potential savings of 0 KiB                        |
| Low    | <b>Avoid large layout shifts</b>                                    | 5 elements found                                  |
| Low    | <b>Avoid non-composited animations</b>                              | 3 animated elements found                         |
| Low    | <b>Avoid chaining critical requests</b>                             | 7 chains found                                    |
| Low    | <b>Remove unused JavaScript</b>                                     | Potential savings of 83 KiB                       |
| N/A    | <b>Largest Contentful Paint element</b>                             | 1 element found                                   |
| N/A    | <b>Minimize main-thread work</b>                                    | 0.7 s   |
| N/A    | <b>Reduce the impact of third-party code</b>                        | Third-party code blocked the main thread for 0 ms |
| N/A    | <b>Replace large JavaScript libraries with smaller alternatives</b> | 0 large libraries found                           |
| N/A    | <b>User Timing marks and measures</b>                               |   |