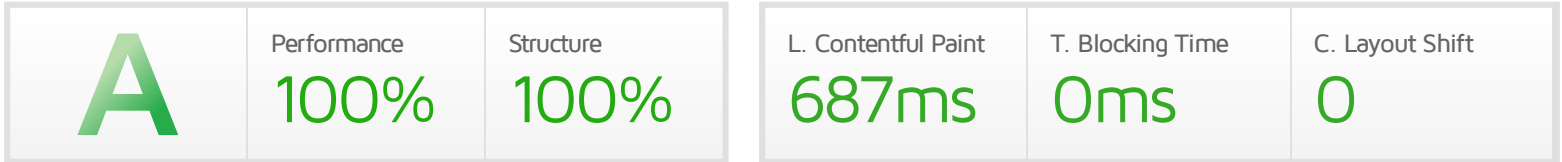


# Performance Report for: <https://mdswlaw.com/>

Report generated: Wed, Mar 23, 2022 11:45 AM -0700  
 Test Server Location: Vancouver, Canada  
 Using: Chrome (Desktop) 90.0.4430.212, Lighthouse 8.3.0  
 Analysis options: Nexus 5



## Top Issues

IMPACT	AUDIT	
Low	Eliminate render-blocking resources	Potential savings of 31ms
Low	Serve static assets with an efficient cache policy	Potential savings of 13.9KB
Low	Avoid an excessive DOM size	315 elements
Low	Avoid enormous network payloads	Total size was 267KB
Low	Avoid long main-thread tasks	1 long task found

## Page Details



Total Page Size - 264KB



Total Page Requests - 26



■ HTML 
 ■ JS 
 ■ CSS 
 ■ IMG 
 ■ Video 
 ■ Font 
 ■ Other

### How does this affect me?

Today's web user expects a fast and seamless website experience. Delivering that fast experience can result in increased visits, conversions and overall happiness.

As if you didn't need more incentive, **Google has announced that they are using page speed in their ranking algorithm.**

### About GTmetrix

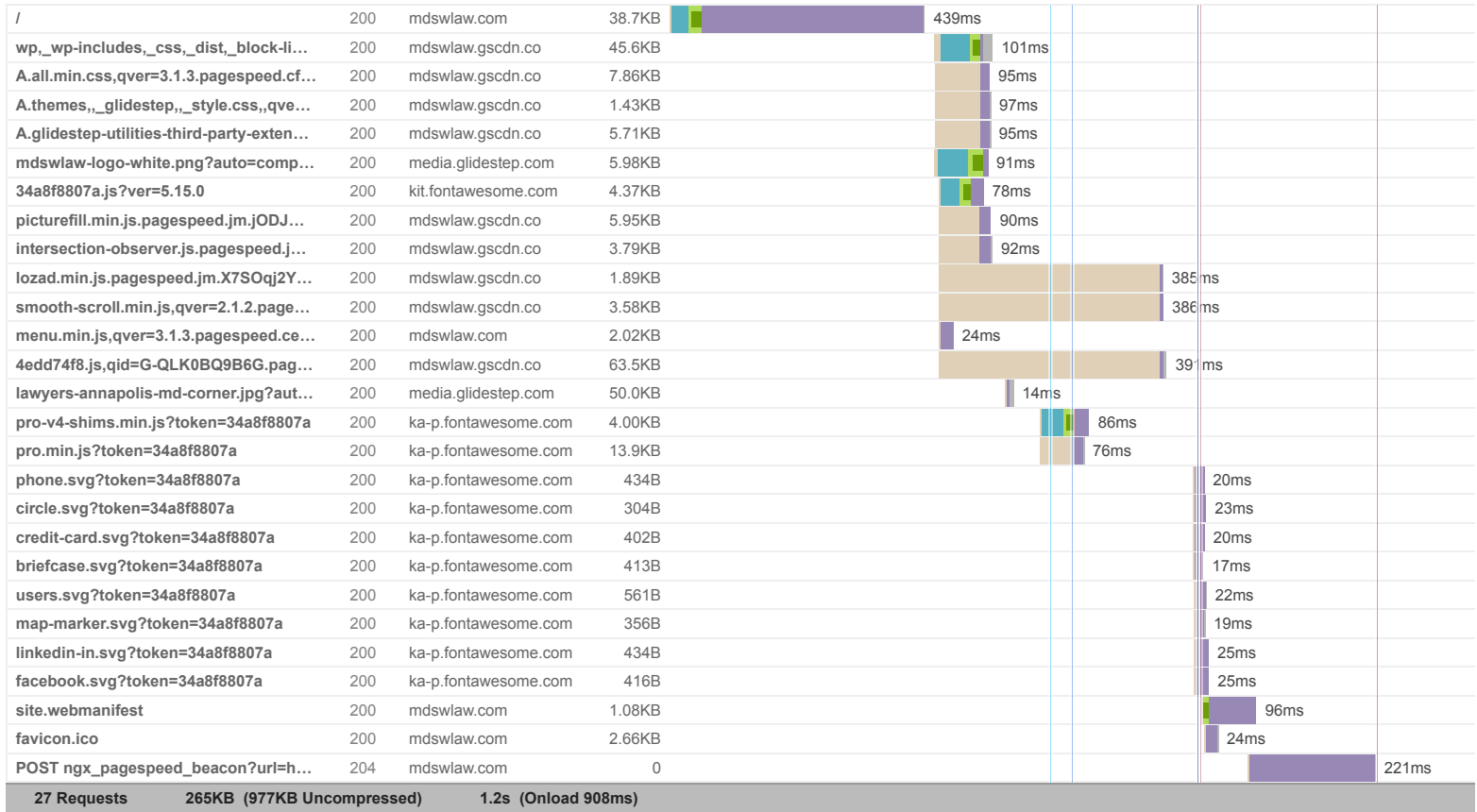
GTmetrix is developed by the good folks at **CARBON60**, a Canadian hosting company with over 26 years experience in web technology.

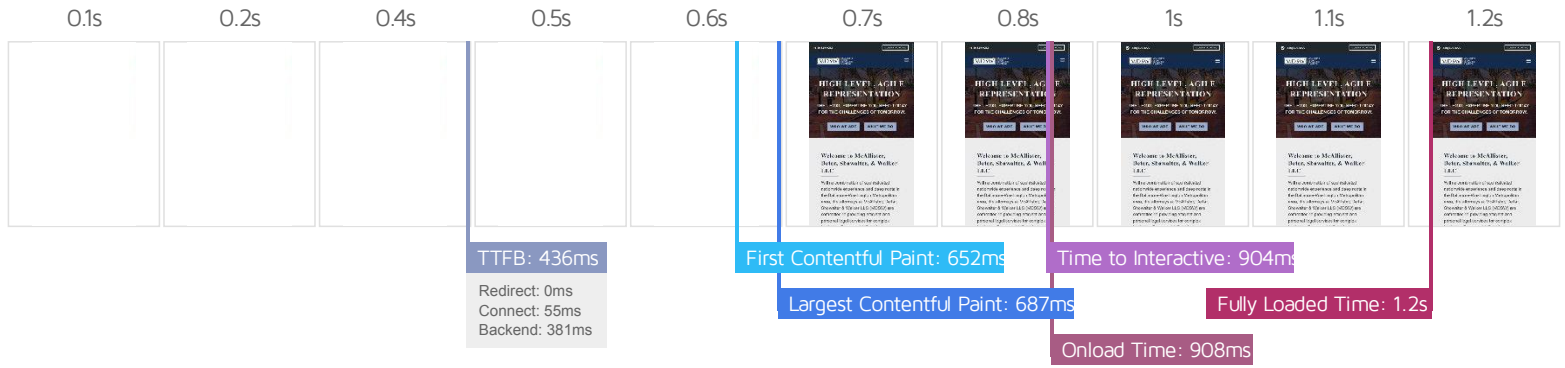


<https://carbon60.com/>

The waterfall chart displays the loading behaviour of your site in your selected browser. It can be used to discover simple issues such as 404's or more complex issues such as external resources blocking page rendering.

### MDSW | Comprehensive Legal Representation | Maryland-Based, National Leadership





### Performance Metrics

<p><b>First Contentful Paint</b></p> <p>How quickly content like text or images are painted onto your page. A good user experience is 0.9s or less.</p>	<p>Good - Nothing to do here</p> <p><b>651ms</b></p>	<p><b>Time to Interactive</b></p> <p>How long it takes for your page to become fully interactive. A good user experience is 2.5s or less.</p>	<p>Good - Nothing to do here</p> <p><b>903ms</b></p>
<p><b>Speed Index</b></p> <p>How quickly the contents of your page are visibly populated. A good user experience is 1.3s or less.</p>	<p>Good - Nothing to do here</p> <p><b>678ms</b></p>	<p><b>Total Blocking Time</b></p> <p>How much time is blocked by scripts during your page loading process. A good user experience is 150ms or less.</p>	<p>Good - Nothing to do here</p> <p><b>0ms</b></p>
<p><b>Largest Contentful Paint</b></p> <p>How long it takes for the largest element of content (e.g. a hero image) to be painted on your page. A good user experience is 1.2s or less.</p>	<p>Good - Nothing to do here</p> <p><b>687ms</b></p>	<p><b>Cumulative Layout Shift</b></p> <p>How much your page's layout shifts as it loads. A good user experience is a score of 0.1 or less.</p>	<p>Good - Nothing to do here</p> <p><b>0</b></p>

### Browser Timings

Redirect	0ms	Connect	55ms	Backend	381ms
TTFB	436ms	First Paint	652ms	DOM Int.	886ms
DOM Loaded	904ms	Onload	908ms	Fully Loaded	1.2s

IMPACT	AUDIT	
Low	<b>Eliminate render-blocking resources</b>	Potential savings of 31ms
Low	<b>Serve static assets with an efficient cache policy</b>	Potential savings of 13.9KB
Low	<b>Avoid an excessive DOM size</b>	315 elements
Low	<b>Avoid enormous network payloads</b>	Total size was 267KB
Low	<b>Avoid long main-thread tasks</b>	1 long task found
Low	<b>Reduce JavaScript execution time</b>	69ms spent executing JavaScript
Low	<b>Reduce unused CSS</b>	Potential savings of 45.3KB
Low	<b>Reduce initial server response time</b>	Root document took 380ms
Low	<b>Avoid serving legacy JavaScript to modern browsers</b>	Potential savings of 167B
Low	<b>Avoid large layout shifts</b>	2 elements found
Low	<b>Avoid chaining critical requests</b>	11 chains found
Low	<b>Reduce unused JavaScript</b>	Potential savings of 31.9KB
N/A	<b>Largest Contentful Paint element</b>	1 element found
N/A	<b>Minimize main-thread work</b>	Main-thread busy for 315ms
N/A	<b>Reduce the impact of third-party code</b>	Total size was 26.0KB
N/A	<b>User Timing marks and measures</b>	