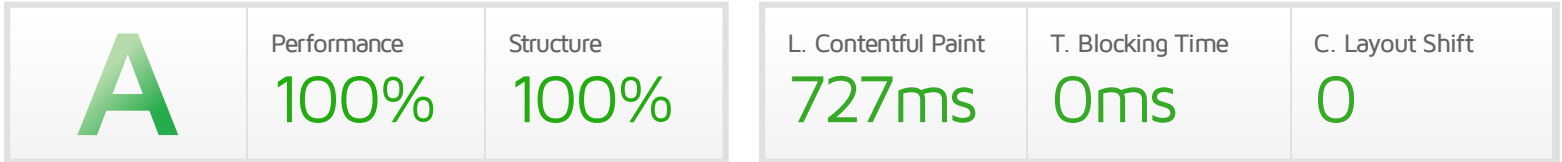


Performance Report for: <https://mdswlaw.com/>

Report generated: Thu, Mar 24, 2022 8:39 AM -0700
 Test Server Location: Vancouver, Canada
 Using: Chrome (Desktop) 90.0.4430.212, Lighthouse 8.3.0
 Analysis options: iPad 3/4/Air/Air 2/2017



Top Issues

IMPACT	AUDIT	
Low	Eliminate render-blocking resources	Potential savings of 31ms
Low	Serve static assets with an efficient cache policy	Potential savings of 13.9KB
Low	Avoid an excessive DOM size	316 elements
Low	Avoid enormous network payloads	Total size was 543KB
Low	Avoid long main-thread tasks	1 long task found

Page Details



Total Page Size - 540KB



Total Page Requests - 28



■ HTML
 ■ JS
 ■ CSS
 ■ IMG
 ■ Video
 ■ Font
 ■ Other

How does this affect me?

Today's web user expects a fast and seamless website experience. Delivering that fast experience can result in increased visits, conversions and overall happiness.

As if you didn't need more incentive, **Google has announced that they are using page speed in their ranking algorithm.**

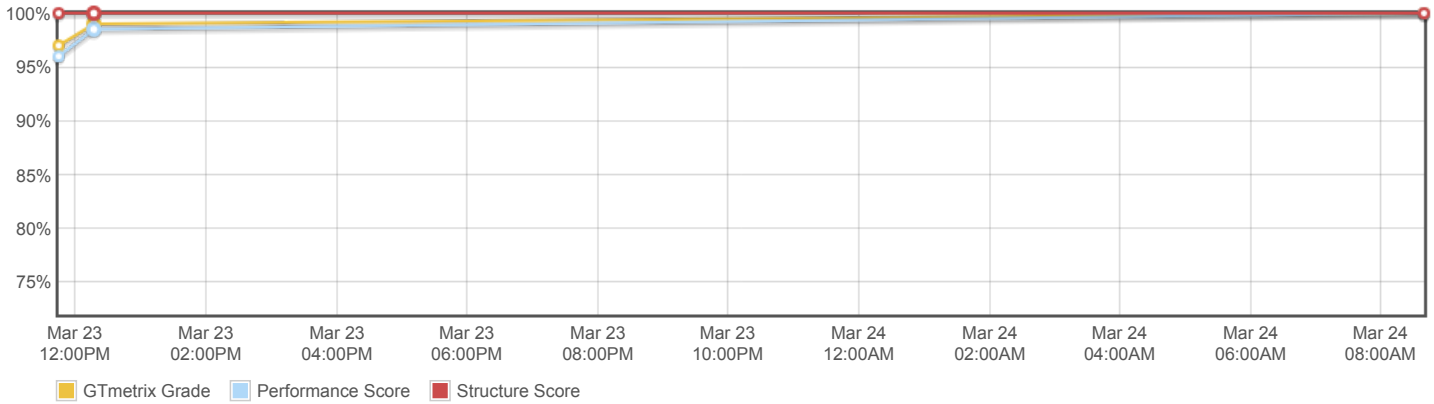
About GTmetrix

CARBON60
THE MANAGED CLOUD COMPANY

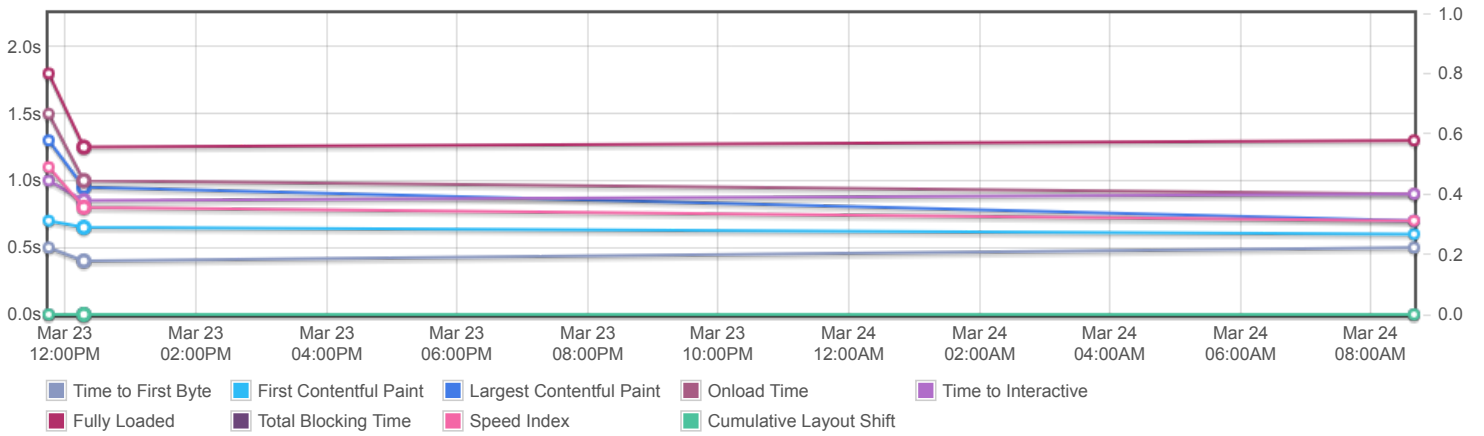
GTmetrix is developed by the good folks at **Carbon60**, a Canadian hosting company with over 26 years experience in web technology.

<https://carbon60.com/>

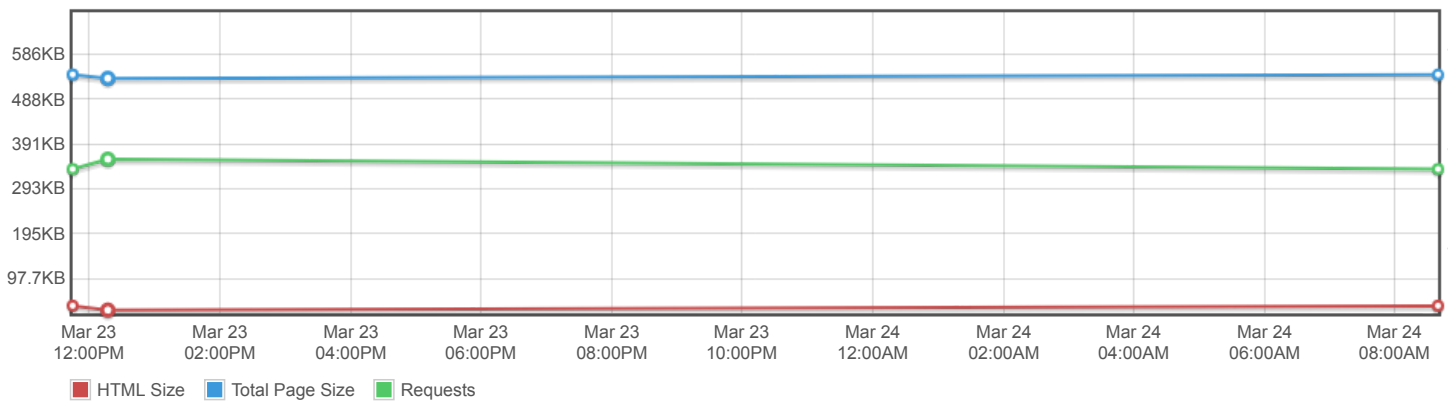
Page scores



Page metrics

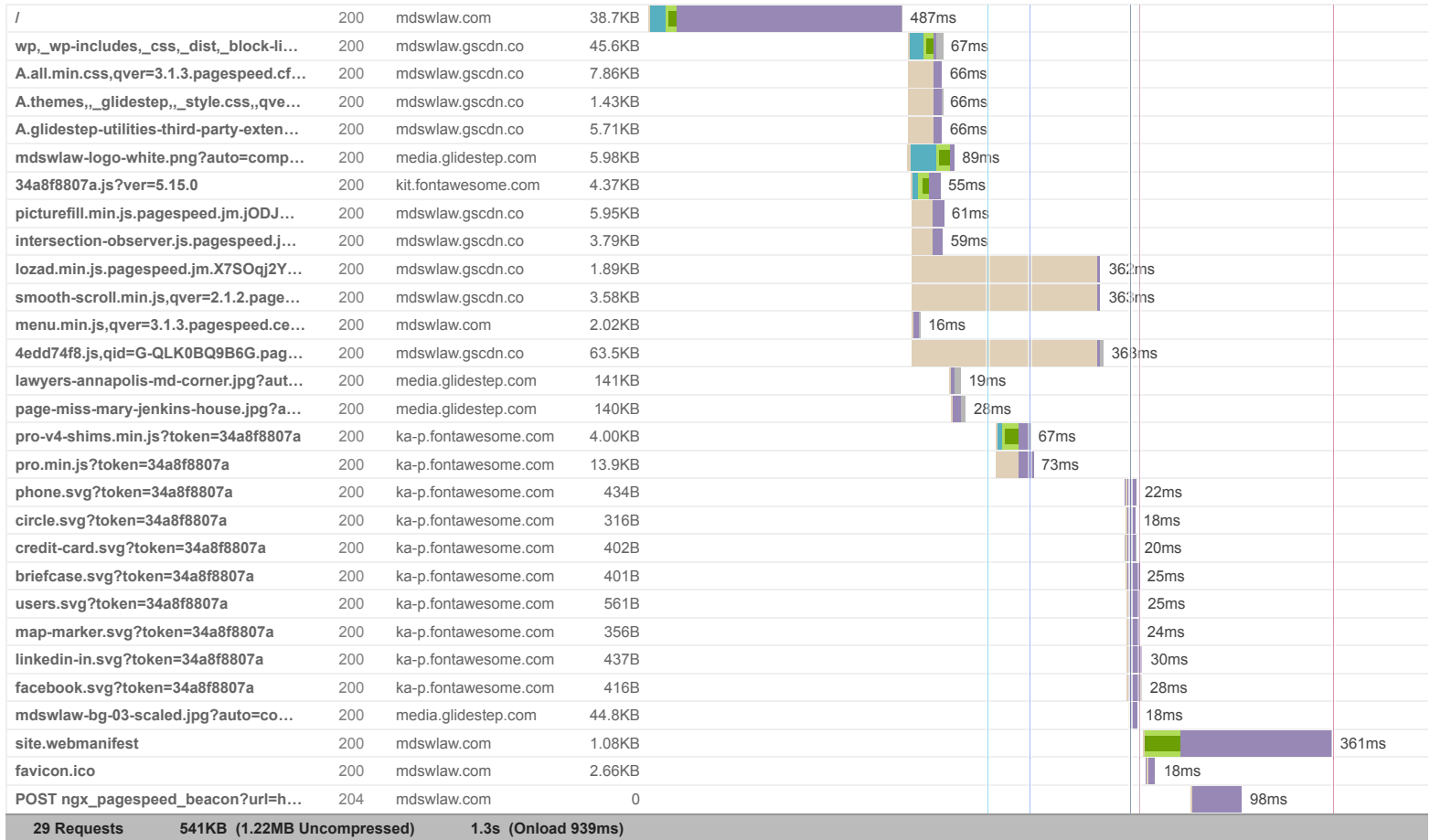


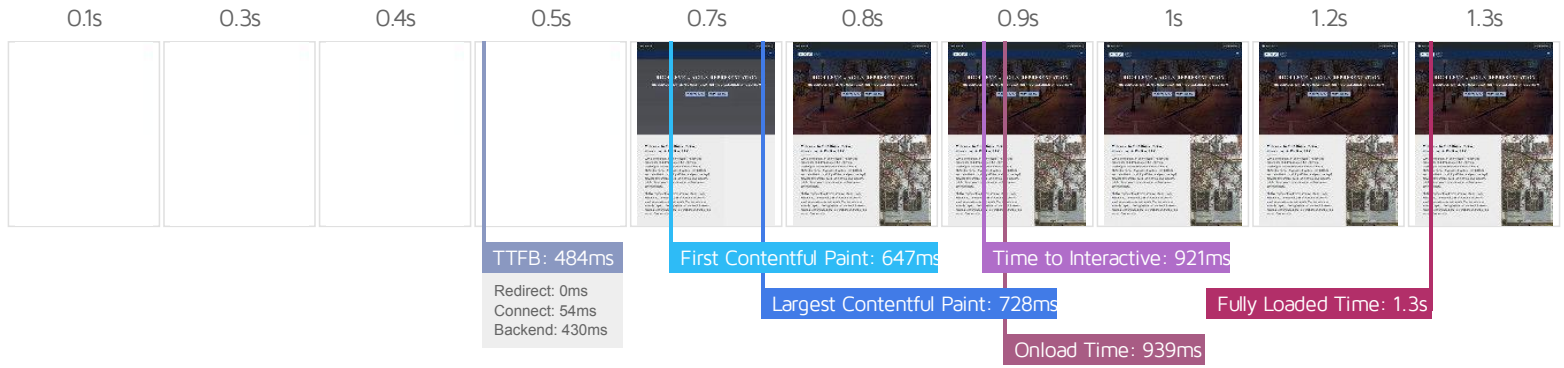
Page sizes and request counts



The waterfall chart displays the loading behaviour of your site in your selected browser. It can be used to discover simple issues such as 404's or more complex issues such as external resources blocking page rendering.

MDSW | Comprehensive Legal Representation | Maryland-Based, National Leadership





Performance Metrics

<p>First Contentful Paint</p> <p>How quickly content like text or images are painted onto your page. A good user experience is 0.9s or less.</p>	<p>Good - Nothing to do here</p> <p>647ms</p>	<p>Time to Interactive</p> <p>How long it takes for your page to become fully interactive. A good user experience is 2.5s or less.</p>	<p>Good - Nothing to do here</p> <p>920ms</p>
<p>Speed Index</p> <p>How quickly the contents of your page are visibly populated. A good user experience is 1.3s or less.</p>	<p>Good - Nothing to do here</p> <p>701ms</p>	<p>Total Blocking Time</p> <p>How much time is blocked by scripts during your page loading process. A good user experience is 150ms or less.</p>	<p>Good - Nothing to do here</p> <p>0ms</p>
<p>Largest Contentful Paint</p> <p>How long it takes for the largest element of content (e.g. a hero image) to be painted on your page. A good user experience is 1.2s or less.</p>	<p>Good - Nothing to do here</p> <p>727ms</p>	<p>Cumulative Layout Shift</p> <p>How much your page's layout shifts as it loads. A good user experience is a score of 0.1 or less.</p>	<p>Good - Nothing to do here</p> <p>0</p>

Browser Timings

Redirect	0ms	Connect	54ms	Backend	430ms
TTFB	484ms	First Paint	647ms	DOM Int.	903ms
DOM Loaded	921ms	Onload	939ms	Fully Loaded	1.3s

IMPACT	AUDIT	
Low	Eliminate render-blocking resources	Potential savings of 31ms
Low	Serve static assets with an efficient cache policy	Potential savings of 13.9KB
Low	Avoid an excessive DOM size	316 elements
Low	Avoid enormous network payloads	Total size was 543KB
Low	Avoid long main-thread tasks	1 long task found
Low	Reduce JavaScript execution time	137ms spent executing JavaScript
Low	Reduce unused CSS	Potential savings of 45.3KB
Low	Reduce initial server response time	Root document took 430ms
Low	Avoid serving legacy JavaScript to modern browsers	Potential savings of 167B
Low	Avoid large layout shifts	2 elements found
Low	Avoid chaining critical requests	11 chains found
Low	Reduce unused JavaScript	Potential savings of 31.9KB
N/A	Largest Contentful Paint element	1 element found
N/A	Minimize main-thread work	Main-thread busy for 333ms
N/A	Reduce the impact of third-party code	Total size was 26.0KB
N/A	User Timing marks and measures	