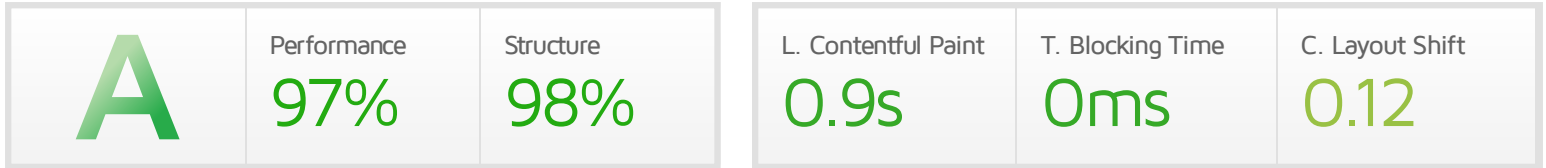




Performance Report for: https://roofingathensga.com/

Report generated: Sat, Mar 6, 2021 6:00 PM -0800
 Test Server Location: Vancouver, Canada
 Using: Chrome (Desktop) 86.0.4240.193, Lighthouse 6.3.0
 Analysis options: Nexus 5



Top Issues

| IMPACT | AUDIT | |
|--------|--------------------------------------|-----------------------------|
| Low | Use a Content Delivery Network (CDN) | 3 resources found |
| Low | Avoid large layout shifts | 5 elements found |
| Low | Properly size images | Potential savings of 46 KiB |
| Low | Remove unused CSS | Potential savings of 44 KiB |
| Low | Avoid an excessive DOM size | 243 elements |

Page Details



Total Page Size - 434KB



Total Page Requests - 40



■ HTML
 ■ JS
 ■ CSS
 ■ IMG
 ■ Video
 ■ Font
 ■ Other

How does this affect me?

Today's web user expects a fast and seamless website experience. Delivering that fast experience can result in increased visits, conversions and overall happiness.

As if you didn't need more incentive, **Google has announced that they are using page speed in their ranking algorithm.**

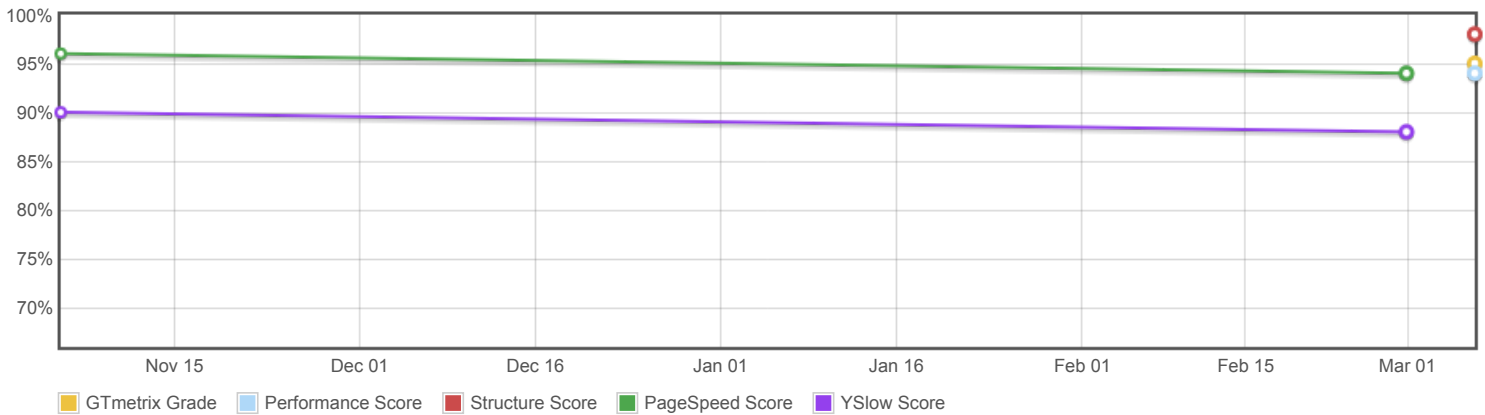
About GTmetrix

GTmetrix is developed by the good folks at **Carbon60**, a Canadian hosting company with over 25 years experience in web technology.

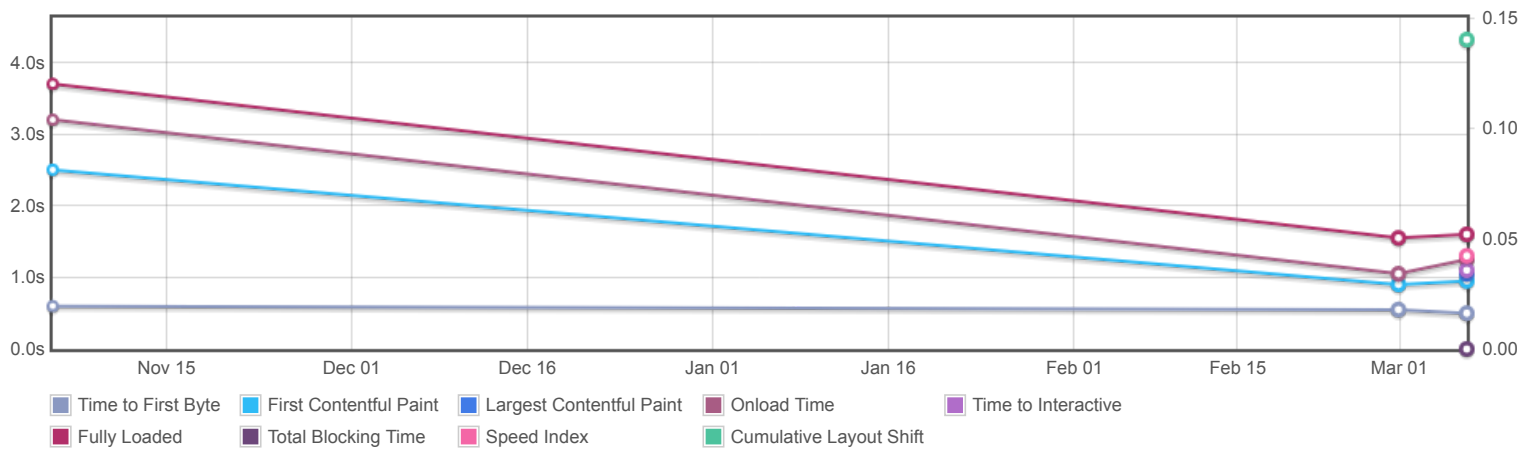


<https://carbon60.com/>

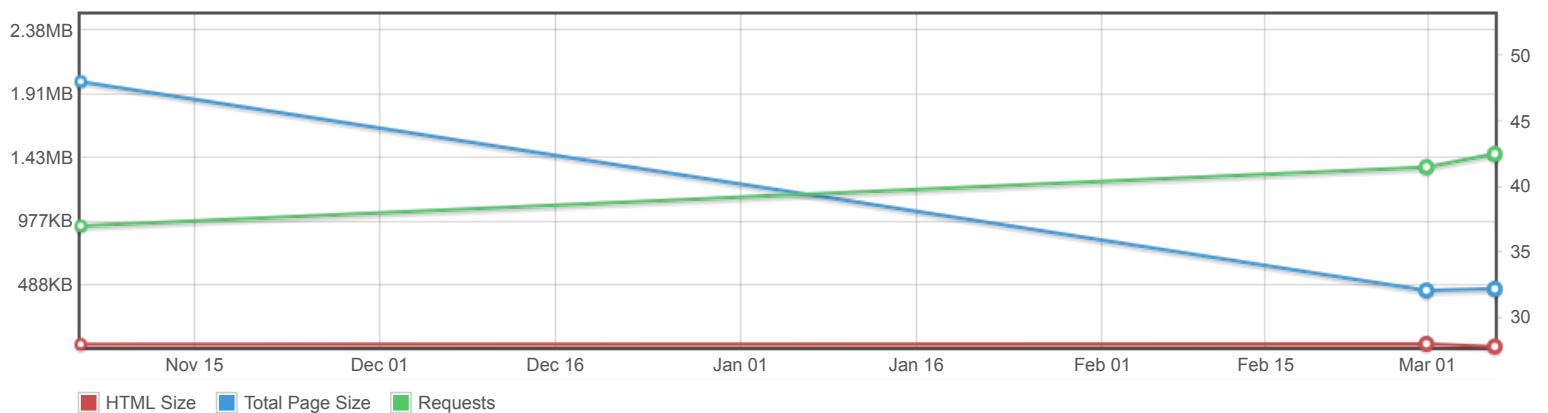
Page scores



Page metrics

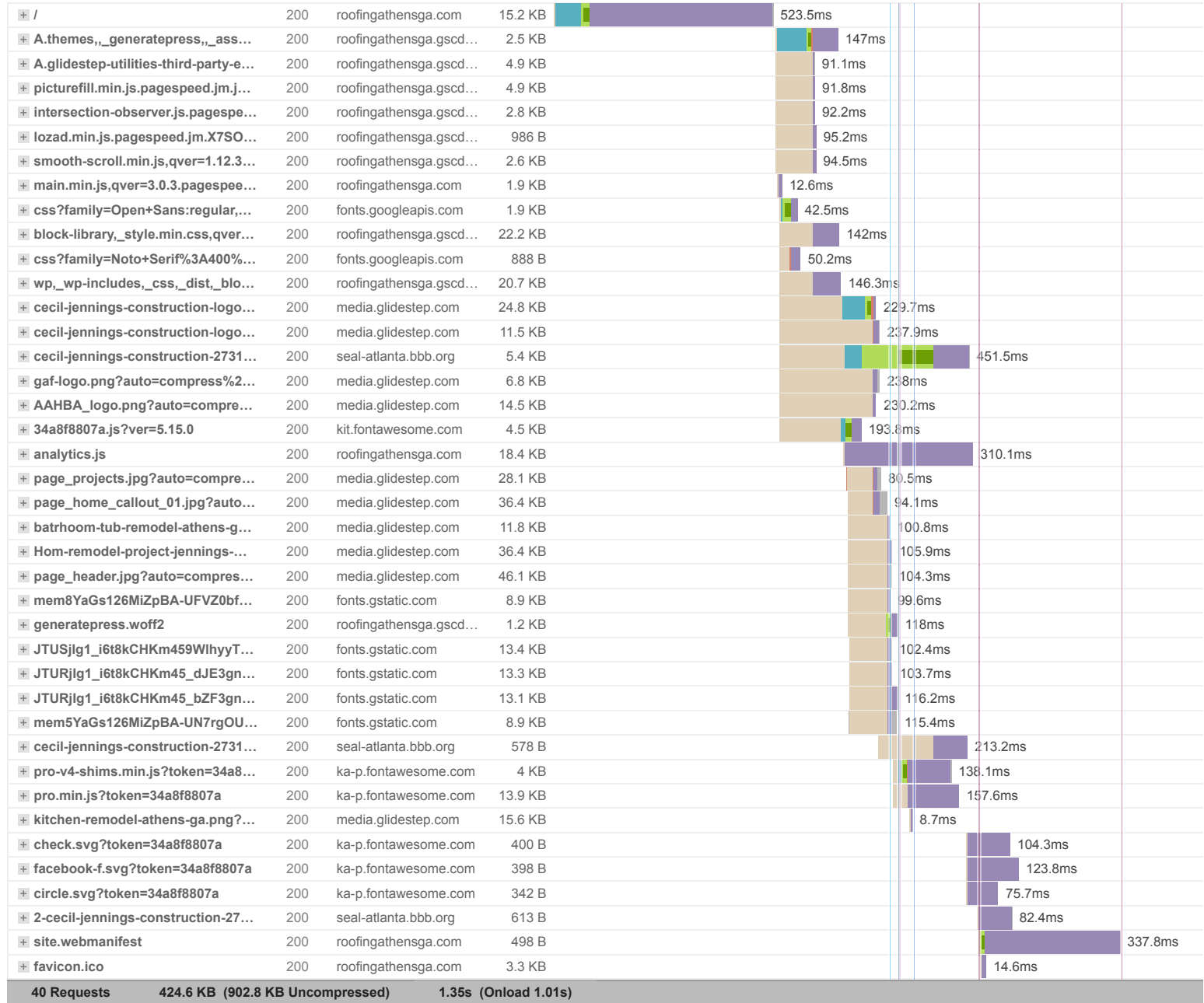


Page sizes and request counts



The waterfall chart displays the loading behaviour of your site in your selected browser. It can be used to discover simple issues such as 404's or more complex issues such as external resources blocking page rendering.

Roofing & Home Remodeling Contractor | Athens, GA | Cecil Jennings





Performance Metrics

| | | | |
|--|---|---|--|
| <p>First Contentful Paint</p> <p>How quickly content like text or images are painted onto your page. A good user experience is 0.9s or less.</p> | <p>Good - Nothing to do here</p> <p>0.8s</p> | <p>Time to Interactive</p> <p>How long it takes for your page to become fully interactive. A good user experience is 2.5s or less.</p> | <p>Good - Nothing to do here</p> <p>0.8s</p> |
| <p>Speed Index</p> <p>How quickly the contents of your page are visibly populated. A good user experience is 1.3s or less.</p> | <p>Good - Nothing to do here</p> <p>1.1s</p> | <p>Total Blocking Time</p> <p>How much time is blocked by scripts during your page loading process. A good user experience is 150ms or less.</p> | <p>Good - Nothing to do here</p> <p>0ms</p> |
| <p>Largest Contentful Paint</p> <p>How long it takes for the largest element of content (e.g. a hero image) to be painted on your page. A good user experience is 1.2s or less.</p> | <p>Good - Nothing to do here</p> <p>0.9s</p> | <p>Cumulative Layout Shift</p> <p>How much your page's layout shifts as it loads. A good user experience is a score of 0.1 or less.</p> | <p>OK, but consider improvement</p> <p>0.12</p> |

Browser Timings

| | | | | | |
|------------|------|-------------|------|--------------|-------|
| Redirect | 0ms | Connect | 83ms | Backend | 439ms |
| TTFB | 0.5s | First Paint | 0.8s | DOM Int. | 0.8s |
| DOM Loaded | 0.8s | Onload | 1.0s | Fully Loaded | 1.4s |

| IMPACT | AUDIT | |
|--------|---|---|
| Low | Use a Content Delivery Network (CDN) | 3 resources found |
| Low | Avoid large layout shifts | 5 elements found |
| Low | Properly size images | Potential savings of 46 KiB |
| Low | Remove unused CSS | Potential savings of 44 KiB |
| Low | Avoid an excessive DOM size | 243 elements |
| Low | Avoid enormous network payloads | Total size was 438 KiB |
| Low | Serve static assets with an efficient cache policy | 3 resources found |
| Low | Ensure text remains visible during webfont load | |
| Low | Avoid long main-thread tasks | 2 long tasks found |
| Low | Reduce JavaScript execution time | 0.1 s |
| Low | Reduce initial server response time | Root document took 440 ms |
| Low | Avoid serving legacy JavaScript to modern browsers | Potential savings of 0 KiB |
| Low | Defer offscreen images | Potential savings of 88 KiB |
| Low | Avoid chaining critical requests | 9 chains found |
| N/A | Largest Contentful Paint element | 1 element found |
| N/A | Minimize main-thread work | 0.5 s |
| N/A | Reduce the impact of third-party code | Third-party code blocked the main thread for 0 ms |
| N/A | Replace large JavaScript libraries with smaller alternatives | 0 large libraries found |
| N/A | User Timing marks and measures | |